

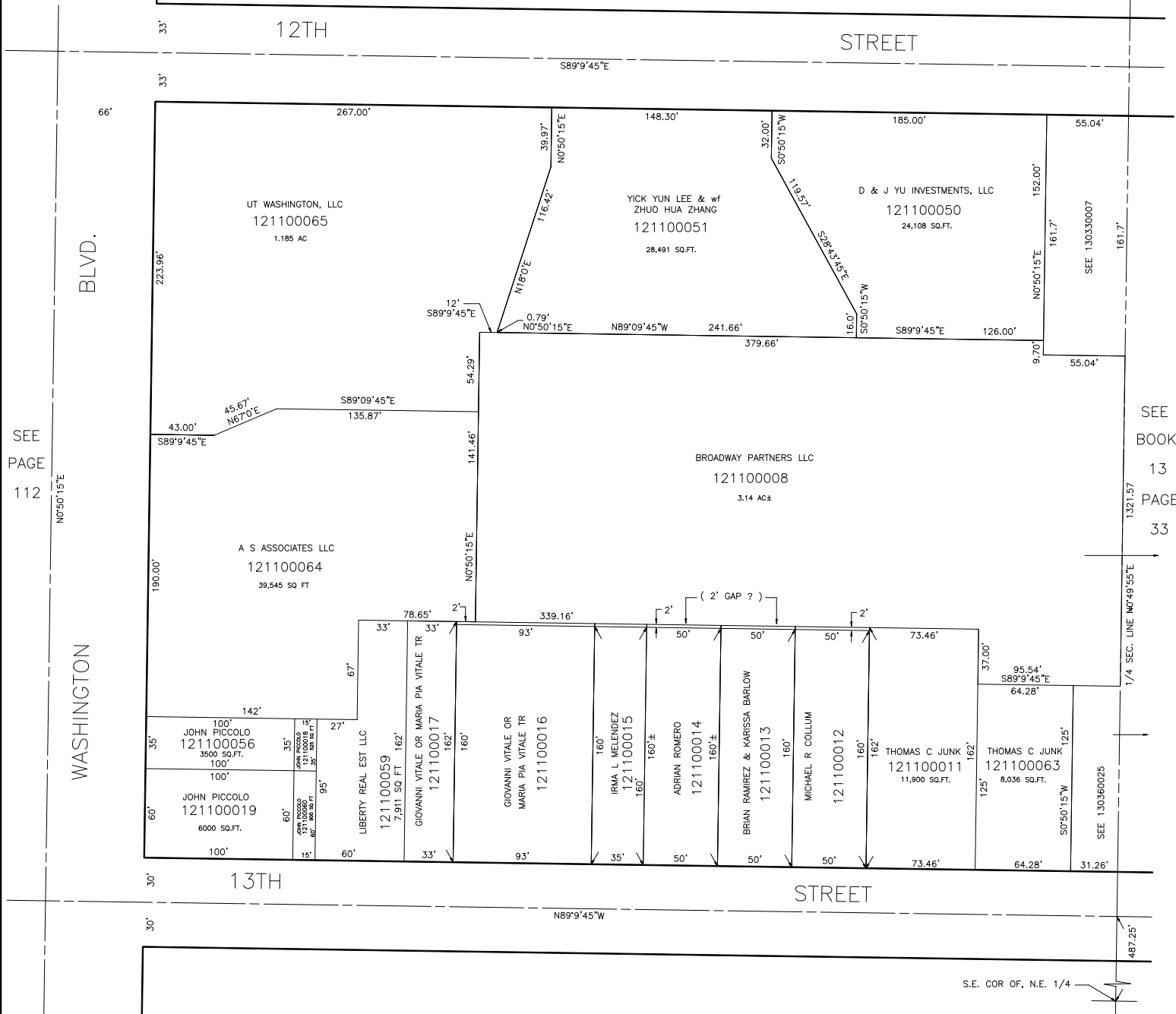
PART OF S.E. 1/4 OF N.E. 1/4
SECTION 20, T.6N., R.1W., S.L.B. & M.

110-1

IN OGDEN CITY
 SCALE 1" = 50'

TAXING UNIT: 25

SEE PAGE 110



SEE PAGE 112

SEE BOOK 13 PAGE 33

SEE PAGE 111